

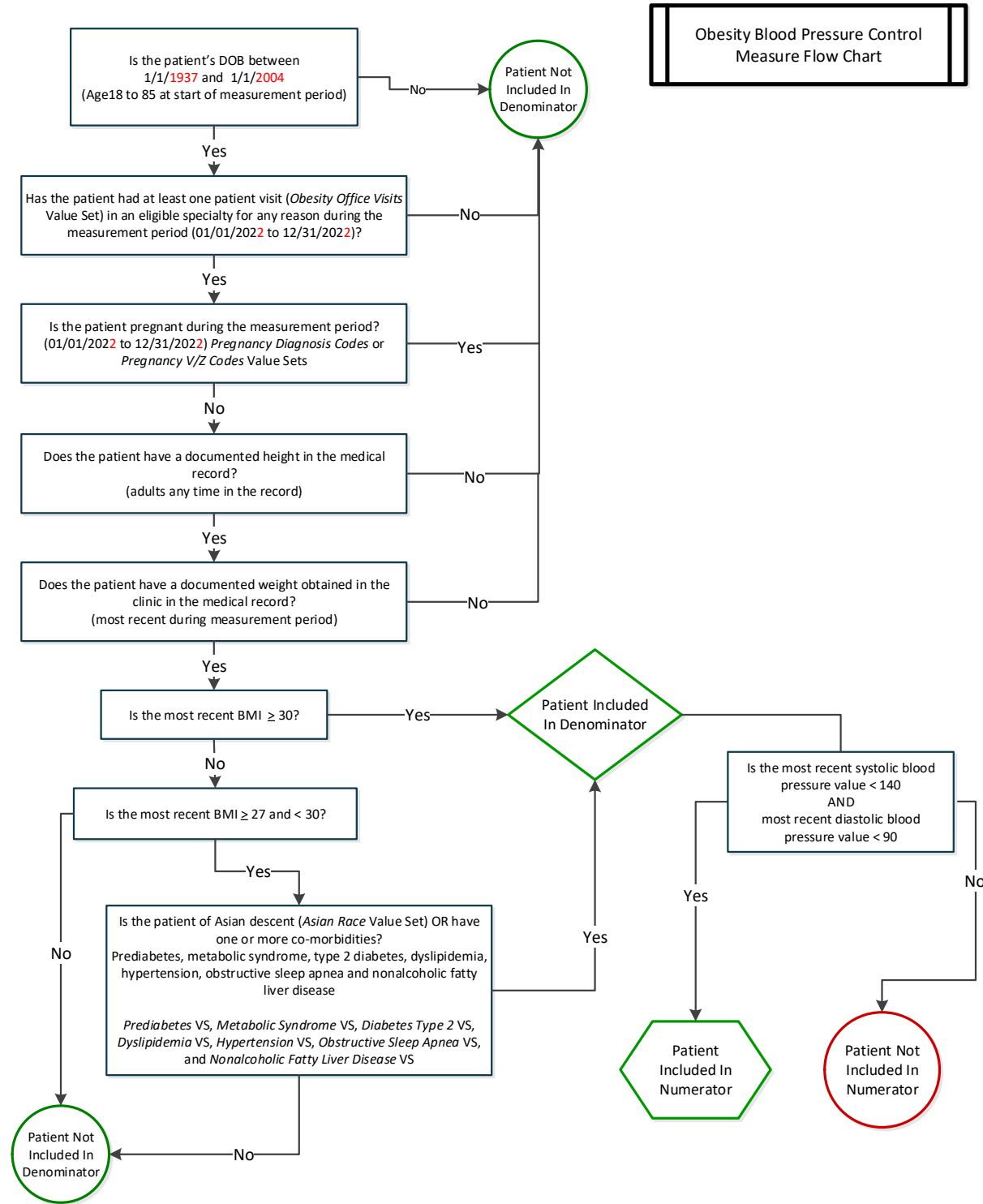
Obesity Blood Pressure Control

Measure	Obesity Blood Pressure Control	
Description	The percentage of adult patients 18 to 85 years of age whose most recent BMI is ≥ 30 or ≥ 27 with comorbidities* or Asian descent whose most recent blood pressure during the measurement period is less than 140 systolic <u>and</u> less than 90 diastolic.	
Measurement Period	January 1 through December 31, 202 x	
Eligible Population	Eligible Specialties	Family Medicine, Internal Medicine, and Endocrinology
	Ages	18 years or older at the start of the measurement period
	Event	Office visit during the measurement period (<i>Obesity Office Visits VS</i>) and with office recorded height and weight <u>and</u> with most recent BMI/BMI percentile defined as obese [adult ≥ 30 or ≥ 27 with comorbidity* or of Asian descent or children with BMI percentile ≥ 95
Denominator	The eligible population	
Numerator	The number of patients in the denominator whose most recent blood pressure period is less than 140 systolic <u>and</u> less than 90 diastolic.	
Exclusions	Pregnancy during the measurement period. (<i>Pregnancy V/Z Codes VS, Pregnancy Diagnosis Codes VS, Diabetes with Pregnancy VS</i>)	
Measure Scoring	Rate/Proportion	
Interpretation of Score	Higher score indicates better quality	
Measure Type	Outcome	
Comorbidities*	Prediabetes, metabolic syndrome, type 2 diabetes, dyslipidemia, hypertension, obstructive sleep apnea and nonalcoholic fatty liver disease. (<i>Prediabetes VS, Metabolic Syndrome VS, Diabetes Type 2 VS, Dyslipidemia VS, Hypertension VS, Obstructive Sleep Apnea VS, Nonalcoholic Fatty Liver Disease VS</i>)	

Key Data Elements Needed to Calculate Measure:

- Birthdate for age calculation
- Height and weight for adult BMI calculation
- Systolic and diastolic blood pressure values
- CPT office visit codes
- Race (OMB categories)
- ICD-10 diagnosis codes (from problem list) for comorbidities
- ICD-10 diagnosis codes (encounter) for pregnancy exclusion

Measure Algorithm



Value Sets for Measure

Office Visits (Denominator)

- OB-1 *Obesity Office Visits*

Pregnancy (Exclusion)

- DM-02 *Diabetes with Pregnancy*
- PREG-01 *Pregnancy V/Z- Codes*
- PREG-02 *Pregnancy Diagnosis Codes*

Comorbidities (BMI \geq 27)

- OB-05 *Prediabetes*
- OB-12 *Metabolic Syndrome*
- DM-01 subset *Diabetes Type 2*
- OB-06 *Dyslipidemia*
- OB-07 *Hypertension*
- OB-08 *Obstructive Sleep Apnea*
- OB-09 *Nonalcoholic Fatty Liver Disease*
- OB-10 *Asian Race*